



Patented

**Technical specifications**

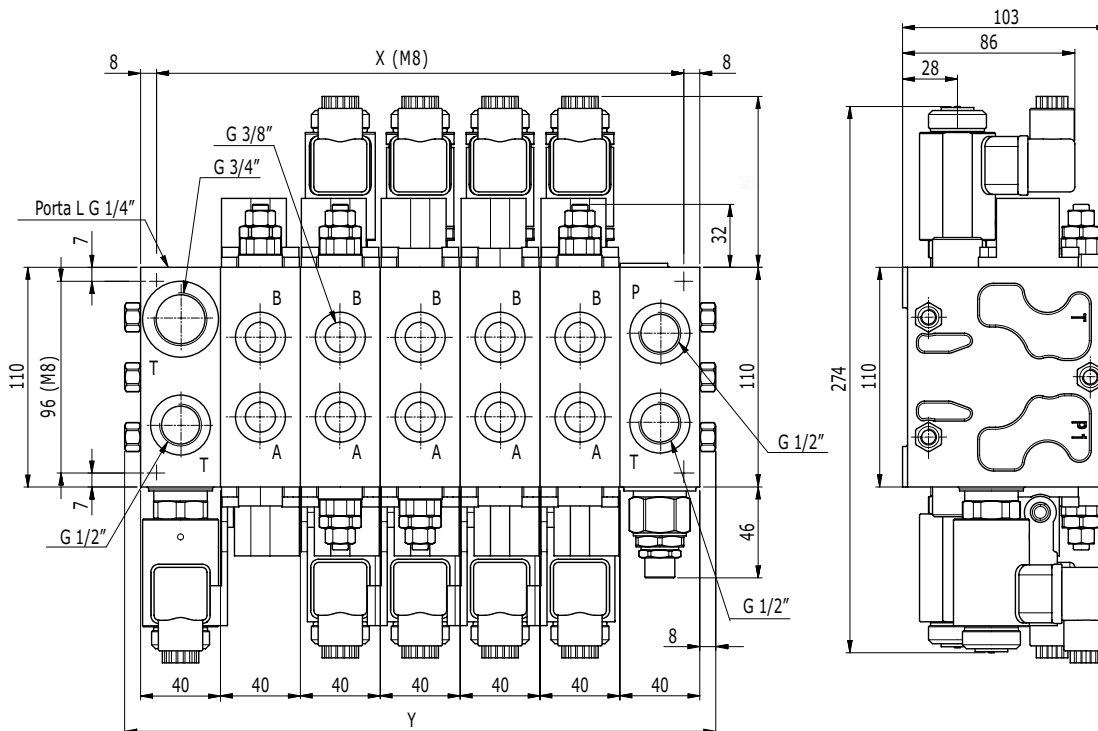
Working section number	1 - 8
Rated flow	40 l/min - 10,5 GPM
Rated pressure	350 bar - 5000 PSI
Spool stroke	5 + 5 mm
Spool pitch	40 mm

**Applications**

Cranes and Aerial platforms, Aerial platforms  
Concrete pumps, Compactor, Hook and Skip loaders

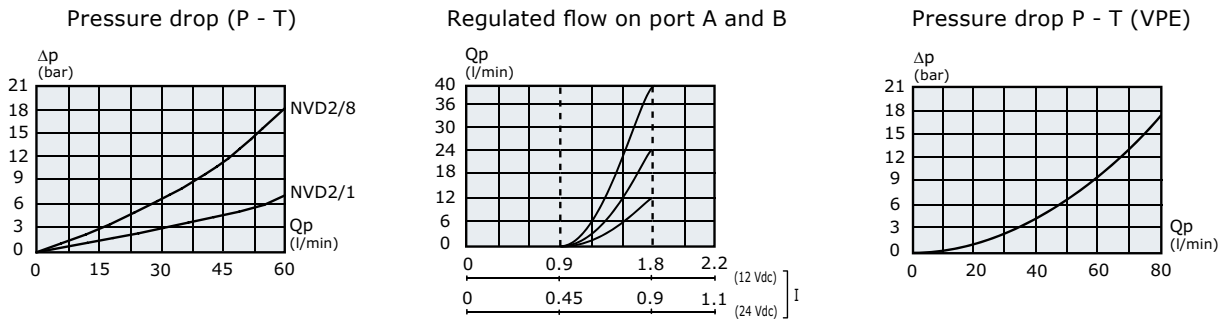
The patented Flow Sensing technology of HC-NVD2 allows a perfect integration between design simplicity and high functional performances: the design is lean and reliable like an open center valve, but the control characteristics are typical of a load sensing valve: fine control is not affected by the load changing and the simultaneous movements. Overall dimensions are reduced thanks to the lack of sectional compensators and to integrated proportional valves for electrohydraulic actuation. Pressure drop in the stand-by condition are typical of an open center valve, particularly low compared to load sensing systems.

**Dimensions**



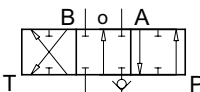
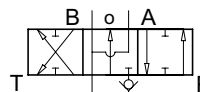
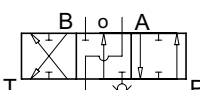
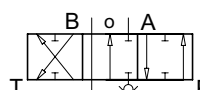
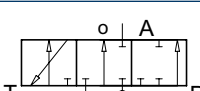
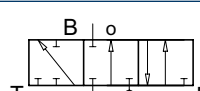
TYPE	/1	/2	/3	/4	/5	/6	/7	/8
<b>X (mm)</b>	114	154	194	234	274	314	354	394
<b>Y (mm)</b>	129	169	209	249	289	329	369	409
<b>Weights (kg)</b>	8	10,8	13,7	16,5	19,4	22,3	25,2	28
<b>PORTS</b>	<b>Inlet (P)</b>		<b>Ports (A-B)</b>		<b>Outlets (T-HPCO)</b>		<b>Outlet (T1)</b>	
<b>BSP Thread (ISO - 228)</b>	G 1/2		G 3/8		G 1/2		G 3/4	
<b>UN-UNF Thread (ISO - 725)</b>	7/8" - 14 UNF		3/4" - 16 UNF		7/8" - 14 UNF		1"1/16 - 12 UNF	

Typical curves



Indicated values have been tested with standard sectional valve and W001A spools.

Spool type

<p><b>W001</b></p> <p>3 positions double-acting</p> 	<p><b>W002</b></p> <p>3 positions double-acting A and B to tank</p> 
<p><b>W003</b></p> <p>3 positions double-acting A to tank B blocked</p> 	<p><b>W004</b></p> <p>3 positions double-acting A blocked B to tank</p> 
<p><b>W005</b></p> <p>3 positions single-acting on A</p> 	<p><b>W006</b></p> <p>3 positions single-acting on B</p> 

The control characteristic depends on the spool and on the section type (see product catalogue for more information). Depending on the pump flow, there are following available spools:

- A** : flow Q = above 30 l/min
- B** : flow Q = from 15 to 30 l/min
- C** : flow Q = up to 15 l/min

Features

HC-NVD2 is available for fixed pump system (standard) and for variable pump (on request). The inlet section has an integrated precharge valve to allow correct operations of the electrohydraulic control. Manual and electrohydraulic proportional and ON-OFF controls are available. Proportional electrovalves need PWM current control. It is possible to limit maximum flow on every port by changing maximum current value to the proportional electrovalves. Working sections have ports auxiliary valves. On the outlet section it is possible to have an electric operated dump valve for security functions